

Bigfoot Go-Ped® OEM Parts List

Part #	Description
8001	FRONT AXLE ASSY.
8002	BRAKE MOTION BUSHING
8003	DISC
1031	DISC BOLTS
8004	DISC SPACERS
8005	BRAKE SPRING
8006	CLUTCH CABLE
8007	CLUTCH LEVER
8008	BF HUB NUTS
8009	BF HUB BOLTS
1016	QUICK RELEASE WASHER
8010	BF REAR FENDER
8011	REAR BRAKE
8012	ENGINE MOUNT
8013	MOTOR MOUNT BUSHING
8014	ENGINE MOUNT NUT
8015	ENGINE MOUNT BOLT
8016	SWIVEL DAMPEN WASHER
8017	ENGINE MOUNT SPRING
8018	DISK BRAKE CALIPER
BF1001	BIG FOOT FRAME
BF1002	WIRE LATCH ASSY.
BF1006	BIG FOOT DECK
1007	DECK HARDWARE KIT
1008	DECK BOLT
1009	DECK WASHER
1010	DECK NUT
1011	MOUNTING GROMMET
BF1013	BIG FOOT DRIVE SPINDLE
BF1019	MUFFLER CONNECT TUBE
BF1027	BIG FOOT FORKS
1028	FRONT FORK BEARING KIT
BF1033	AXLE BOLT
BF1034	BF KICK STAND
BF1036	AXLE LOCK WASHER
BF1038A	BF WHEEL BEARING
BF1038B	BF BEARING SPACER
BF1041	BF T-BAR W/O CABLES
BF1046	BF T-BAR W/ CABLES
BF1058	COMPLETE WHEEL AND TIRE ASSY. W/O BRAKE DISC
BF1058D	COMPLETE WHEEL AND TIRE ASSY. WITH BRAKE DISC
1061	"T" HANDLE PAD
1062	SAFETY SPRING & GRIP KIT
1063	YELLOW WARNING STICKER
1064	RED WARNING LABEL
BF1050	THROTTLE CABLE ASSY.
BF1058H	BF HUB
BF1058O	BF RUBBER TIRE
BF1058T	BF TUBE





Dudester says,
 "Make sure you place **EXTRA ATTENTION** to the yellow safety warning sections of this manual. These are very important to understand before you ride your Go-Ped®."

BIGFOOT GO-PED® SPECIFICATIONS

Length	42 in
Height	43 in
Folded Height	18 in
Width	13 in
Dry Weight	27 lbs
Engine Type	Single Cylinder, Two Stroke, Air Cooled
Engine Displacement	22.5 cc
Ignition	Electronic
Carburetion	Pumper type w/choke and Primer
Fuel	Gasoline Mixed 40:1
Fuel Capacity	1 Liter
Running Duration	1 - 1 1/2 Hrs.
Transmission	Single Speed, Direct Drive
Maximum Carry Capacity	400 lbs.
Wheel Type	10" Pneumatic (Front & Rear)
Braking	Front - Disk Rear - Friction
Starting	Recoil
Turning Radius	3.5 Feet

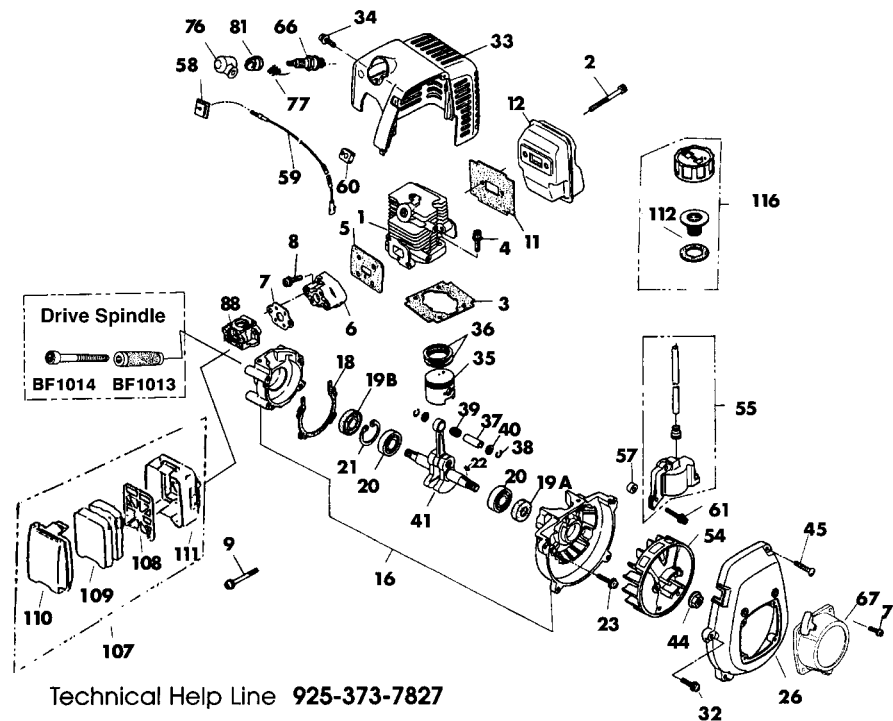


⚠ IMPORTANT ⚠

If you did not completely fill out and submit a warranty registration form to your dealer upon purchasing your Go-Ped® Product, return to your dealer immediately and do so. **Without this form turned in to the manufacturer, YOU DO NOT HAVE A WARRANTY.**

ENGINE PARTS FOR G23-LH ENGINE

Index	Part #	Description	Index	Part #	Description
	4800	Engine	41	4041	Crankshaft Complete
1	4001	Cylinder	44	3044	Flywheel Nut
2	4002	Muffler Bolt	45	4045	Cover Screw
3	4003	Cylinder Gasket	54	4054	Flywheel
4	4004	Cylinder Screw	55	4055	Ignition Coil
5	4005	Insulator Gasket	58	4058	Grommet
6	4006	Insulator Manifold	59	4059	Cord Complete
7	4007	Carburetor Gasket	60	4060	Grommet
8	4008	Insulator Screw	61	4061	Coil Screw
9	3009	Carburetor Screw	66	3066	Spark Plug
11	4011	Muffler Gasket	67	4067	Starter Assy
12	4012	Muffler	76	4112	Cap (plug)
16	4016	Crankcase	77	4113	Spring
18	4018	Crankcase Gasket	79	4079	Starter Screw
19A&B	4019	Oil Seals Set	81	4115	Cap (seal)
20	3020	Main Bearings	88	4088	Carburetor Assy.
21	3021	Snap Rings	107	3107	Cleaner Assy.
22	3022	Flywheel Key	108	3108	Filter Screen
23	4023	Crankcase Screw	109	3109	Air Filter
26	4026	Fan Cover	110	3110	Cover Cleaner
32	4032	Fan Cover Screw		3114	Gas Tank Assy.
33	4033	Engine Cover	111	3111	Rear Filter Housing
34	4034	Cover Screw	112	3117	Gas Cap Packing
35	3035	Piston	116	3116	Gas Cap Assy.
36	3036	Piston Rings Set (2)		3123	Kill Switch
37	3037	Piston Pin		3120	Fuel Filter
38	3038	Snap Ring Set			
39	3039	Pin Bearing			
40	3040	Pin Washers Set			



- **Keep the air intake opening clear of debris.**
- **Do not touch the muffler or cylinder. These parts get extremely hot from operation and remain hot for a short time after the equipment is turned off.**
- **Avoid excess drive spindle to tire slippage to prevent abnormal spindle tire wear.**

DRIVING DEFENSIVELY

Although the engine noise has been reduced, it is difficult to hear vehicles approaching you - head check often and before changing direction. The Bigfoot Go-Ped® has been designed to operate off-road on any hard pack dry surfaces: avoid wet and or oily surfaces, loose sand, potholes, etc. Always use both hands on the handle bar when riding.



- **Do not wear loose fitting clothes or articles such as scarves, strings, chains, ties, etc.**
- **Do not remove rear fender which guards drive mechanism from foreign objects.**

STARTING

BEFORE YOU RIDE - Bigfoot Go-Ped® should be warmed up. Simply trim the motor up so the spindle is not engaged to the wheel. Use the side ("kick") stand to keep the Bigfoot Go-Ped® from falling over. Follow the instructions on the engine pull start cover that explains the choke and primer features.

STARTING INSTRUCTIONS

- 1) Pump primer bulb until fuel flows steadily through clear overflow tube.
- 2) Move choke lever to the closed position.
- 3) Set throttle to start position (half).
- 4) Pull starter until engine starts.
- 5) Allow engine to warm up before using.
- 6) To stop, idle engine, push red kill button.

After warming up the engine (30 seconds to one minute), Place hands on the hand grips (no throttle), raise the side stand and place one foot on the deck. With the other foot briskly push the Bigfoot Go-Ped® forward and slowly trim the motor down using the thumb lever (this may take a little practice, but adequate skill should come within a couple of hours). All this might be easier on a downhill grade.

MOTORIZED RIDING

Power transmission is through a drive spindle connected directly to the engine crankshaft. The rear wheel must be engaged to the drive spindle for motorized operation. Your drive spindle can be engaged or disengaged by using the engine trim thumb lever. Excessive slippage of the friction drive spindle will greatly increase rear tire wear. The rear foot pedal controls rear wheel braking.



Operate this unit only in a well-ventilated area - outdoors, carbon monoxide exhaust fumes can be lethal in a confined area.

MAINTENANCE / PARTS

- All frame parts are available through your distributor
- Engine parts are also available through your local Go-Ped® dealer.
- Use only manufactures original equipment replacement parts when servicing this unit. These parts are available from your authorized dealer. The use of non-standard parts, or other accessories or attachments not designed for this unit could result in serious injury to the user or damage to the unit.

Congratulations! Your purchase puts you among the first of charter member Bigfoot Go-Ped® owners! For years of Bigfooting fun, and to keep your Bigfoot Go-Ped® in top-notch condition, please read the following information **BEFORE YOU RIDE**.

BIGFOOT GO-PED® Assembly Instructions

FRONT WHEEL:

- 1) Inspect all components for damage
- 2) Remove bolt and washers from end of front axle.
- 3) Remove front axle from front steering arm.
- 4) Insert brake disk into front brake caliper and align wheel with axle bushing.
- 5) Insert axle through steering arm bushing and into wheel hub. *It may be necessary to align inner wheel spacer to allow axle insertion.*
- 6) Install and tighten axle bolt.
- 7) Check for smooth wheel rotation and proper front brake actuation.

REAR WHEEL:

- 1) Remove bolt and washers from end of rear axle.
- 2) Adjust engine trim to full forward stop position.
- 3) Install rear wheel with valve stem on left side to prevent interference with gas tank bracket.
- 4) Rotate rear fender and tank mount bracket and align with rear axle.

NOTE: Make sure left side fender tab hooks securely on outside of engine support bracket.

- 1) Install axle bolt with washers between bearings and bracket and nut.
- 2) Tighten rear axle bolt.
- 3) Check for free rotation of rear wheel.
- 4) Check for proper operation of rear brake.
- 5) Check for proper operation of engine trim and drive roller tire contact.

Oil & Fuel Information



BE SURE TO READ THESE INSTRUCTIONS CAREFULLY BEFORE ATTEMPTING TO START OR OPERATE THIS UNIT.
Using old or improper oil or fuel, or improperly mixing the oil and fuel can cause engine damage. This type of damage will void engine warranty.

The Bigfoot Go-Ped® has a two-stroke engine that requires oil to be mixed with gasoline. Use a high quality 2 cycle oil that is formulated for small air cooled engines.

Oil and Fuel Mixing Instructions

NOTE: For proper engine operation and maximum reliability, pay strict attention to the oil and fuel mixing instructions. Use a 40:1 fuel/oil ratio, using improperly mixed fuel can severely damage the engine.

Use the following procedure to ensure proper mixing:

- 1) Put a small amount of fresh gasoline into a clean 1(U.S.) gallon (3.875-liter) fuel can.
- 2) Add 3.2 ounces of 2-cycle oil.
- 3) Fill the remainder of the fuel can with gasoline (1gallon).
- 4) Screw the fuel can cap on tight and **SHAKE THE CAN VIGOROUSLY FOR 30 SECONDS.**

NOTE: Go-Mix II premixed oil packets are recommended and available through your Go-Ped® Dealer.

Fueling & Pre-Operational

- Gasoline is extremely flammable and its vapors can explode if ignited. Always stop the engine and allow to cool before filling fuel tank. Do not smoke while filling fuel tank. Keep sparks and open flames away from the area.
- Add fuel in a clean, well-ventilated area. Avoid spilling the fuel when mixing the oil. Wipe up spilled fuel immediately. If fuel has been spilled allow to dry completely before starting the engine.
- Move the unit at least 10 feet (3m) from the fueling point before starting the engine.
- Pressure can build up in the fuel tank. Loosen the fuel tank cap slowly to relieve any pressure in the tank.
- Store gasoline and fuel only in containers designed and approved for the storage of such materials.



SAFETY WARNING

This vehicle does not conform to Federal Motor Vehicle Safety Standards and is not intended for operation on public streets, roads or highways. Serious injuries can result from unsafe operation of this vehicle. The operator can minimize these risks by wearing safety equipment. **SAFETY HELMET, GOGGLES, GLOVES, ELBOW & KNEEPADS, AND APPROPRIATE SHOES MUST BE WORN. Do not operate this vehicle in TRAFFIC, WET, FROZEN, OR OILY SURFACES.** Avoid uneven surfaces, large chuckholes, surface cracks and obstacles. Adult supervision is strongly recommended.

FOLDING FEATURE

BEFORE YOU RIDE - Be certain the handle lock tube is in its full down position, locking the handlebar upright. The loop fastener holds the handle in the folded position for carrying or storage.

CONTROLS

BEFORE YOU RIDE - familiarize yourself with how your Go-Ped® works.

- The left-hand lever operates the front wheel caliper brake, and stops the engine when going two-mph or less.
- Rear foot pedal operates rear wheel brake.
- The right hand lever operates the engine throttle.
- The red button is the engine kill switch.
- The engine trim lever controls the engagement of the drive spindle to the rear wheel and can also be used for freewheeling or to keep engine running while your Bigfoot Go-Ped® is not in motion. Rear brake is then controlled by rear foot pedal.
- The handle bar supports the rider and steers the Go-Ped® just like a bicycle.
- Always use both hands on the handle bar when riding.

NOTE: To prevent engine "bounce", after normal break in of components, slightly tighten engine mount pivot bolt periodically. This will extend service life of clutch cable, exhaust tube and engine return spring.



SAFETY WARNING

- Persons without excellent vision, balance, coordination, reflex, muscle and bone strength or good decision making capability should not use this product.
- This product should not be used by minors without adult supervision.
- This product should not be used by persons unwilling or to take responsibility for their own actions.
- The user of this product assumes all risks, the user must wear safety helmet, goggles, gloves, elbow and kneepads, and appropriate shoes with ankle support.

PNEUMATIC TIRE INFORMATION

- Never use tires or tubes not recommended by P.M.W. or exceed maximum P.S.I. Limits of the tire assembly in use.
- The Bigfoot Go-Ped® likes higher pressures in the rear (35-45 psi.) for efficient drive system performance and lower pressures in the front (20-30 psi.) for smoother ride characteristics.



Replace front or rear tires when tread is worn within 1/16" tread depth, or if obvious tire damage has occurred.



SAFETY WARNING

Tire wear punctures or ruptures can cause immediate loss of control, which may effect operator and precipitate serious bodily injury. Helmets, goggles, gloves, elbow and knee pads and appropriate shoes with ankle support must be worn at all times.

TIPS

BEFORE YOU RIDE - Thoroughly inspect the unit for loose or damaged parts before each use. Do not use until adjustments or repairs are made. New engine break-in period is a few hours. Avoid full throttle operation during this time. Position your feet in any location that is comfortable to you. Most prefer a parallel stance with the left leg slightly behind the right and bearing most of the weight while bending your knees. When accelerating or climbing hills you will need to lean forward a little to keep the front wheel on the ground. Under hard braking conditions you will need to lean back to keep the rear wheel on the ground.

SUPPORT

Tech. Support Line (925) 373-7827

E-mail - goped@goped.com or on the Internet at www.goped.com

Go-Ped® is a registered trademark of P.M.W.

© 1998 P.M.W. All Rights Reserved rev. 1-99